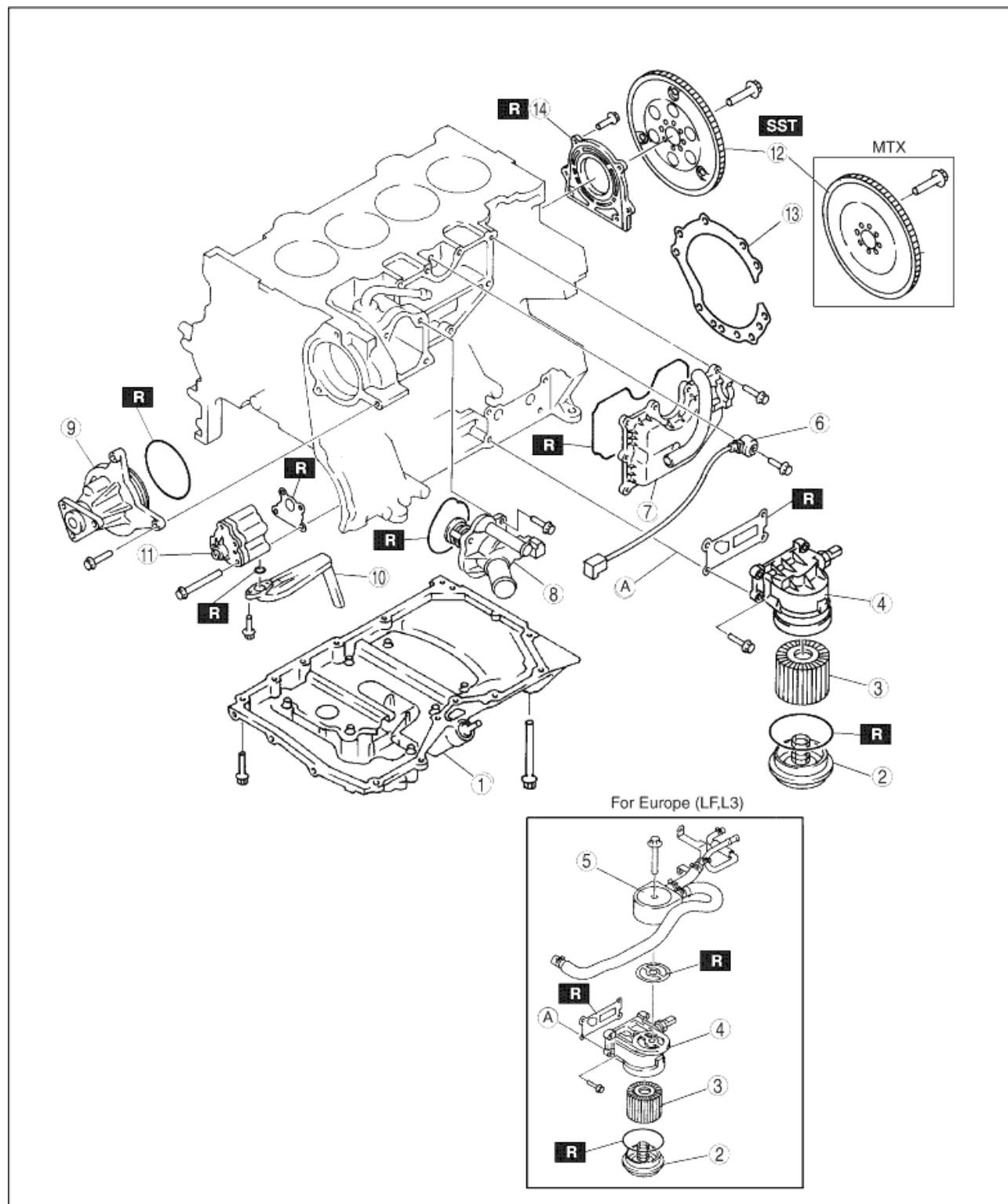


CYLINDER BLOCK (I) DISASSEMBLY

A6E242402000E07

1. Disassemble in the order indicated in the table.



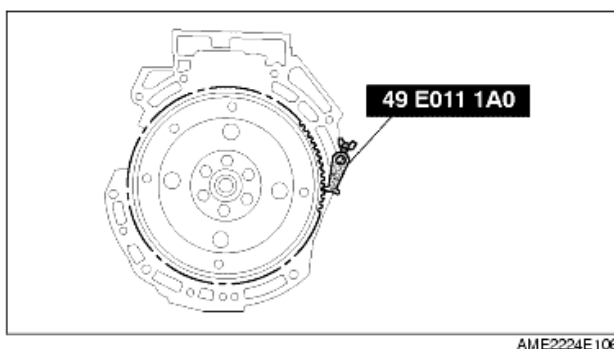
AME2224E01 1

1	Oil pan
2	Oil filter cover
3	Oil filter

4	Oil filter adapter
5	Oil cooler
6	Knock sensor
7	Oil separator
8	Thermostat
9	Water pump
10	Oil strainer
11	Oil pump
12	Flywheel (MTX), Drive plate (ATX) (See Drive Plate (ATX), Flywheel (MTX) Disassembly Note)
13	End plate (MTX)
14	Rear oil seal

Drive Plate (ATX), Flywheel (MTX) Disassembly Note

1. Hold the crankshaft using the **SST**.
2. Remove the bolts in several passes.



AME2224E106